

Western Gateway Gazette
Northern Berkshire Business and Professional Women
Lucy A. Milette, editor. Elizabeth Manns, copyist/production.

December, 2008

Message from your president...



Dear Members:

Snow isn't glistening, and I don't smell any chestnuts roasting over an open fire, seen snow, and there definitely is a nip in the air. The holidays have officially arrived. The stores are packed with bustling shoppers and the city streets are twinkling with various decorations. As we enjoy this season of cheer and merriment I wish everyone a very happy Holiday Season.

Our Holiday gathering at the William's Inn will be held on December 17th. Pauline Davis and Inna Gertje are once again busy little elves planning the event for us to enjoy. We will be collecting items for the Louison House once again (unwrapped please). Also, remember the children's needs for school supplies in Haiti. Remember get your Christmas raffle tickets sold. The more we sell, the more we can add to our scholarship fund.

The Holiday Gathering is hosted by the board members. Each board member is expected to bring one door prize (approximate value \$10 and 2 smaller gifts as game prizes.

Remember to get your Member of the Year nominations to Dot Ransford ASAP so that she can prepare the ballot for voting to be held at our Holiday Party. Scholarship forms were sent out as well, and we need those before January to give the committee time to review all applications and make their decision for our January meeting.

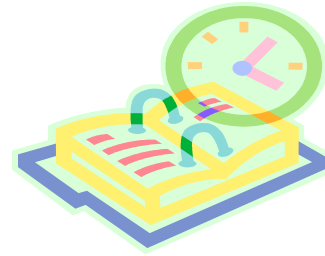
Happy Holidays see you at the party!!

*Paulette Remillard,
President*



December Meeting

(Note Date!)



Date: Dec. 17, 2008

Location: Williams Inn

Program: Holiday Celebration

Menu: Caesar Salad

Choice of:

- 1. Petite Filet Mignon, Roasted Potatoes**
- 2. Filet of Sole Florentine, Rice**
- 3. Cheese Tortellini with Vegetables in Tuscan Tomato, Basil Sauce**

Dessert: Chocolate Yule Log Cake

Coffee, Tea

Cost: \$25.00

**Hostesses: Pauline Davis
413-663-7844
Inna Gertje
413-663-6580**

Please remember: Reservations are due by the Friday before the meeting. If you haven't been called, call one of the hostesses above. Also, you are responsible for reservations made and not honored. We must pay for meals ordered.

*Networking – 6:00
Meeting opens –6:30
Dinner – 6:45*

Guests are welcome!

UPCOMING EVENTS

December 17 – BPW General Meeting

December 21 - 1st Day of Winter

December. 22 – Hanukkah

December 25 – Christmas

December 26 - Kwanzaa



December Birthdays

Fran Czarnecki – 12/9

Deborah Blood – 12/20

IMPORTANT WEBSITES!!

www.bpw/usa.org

www.bpw/ma.org

www.northernberkshirebpw.org

A Simple Inspiration.....

“Don't cry because it's over. Smile because it happened.”

Dr. Seuss

Women's Vote Key in Election

The election is over and women made the difference. Analysis of preliminary CNN exit poll data shows that the gender gap in voting helped elect President-Elect Obama. Nationally, 56 percent of women (who were 53 percent of voters) voted for Barack Obama compared with 49 percent of men (who were 47 percent of voters). Nationwide, it is estimated that Senator Obama received 35,900,000 votes from women and 27,800,000 votes from men. Read the full analysis of the election and the role of women, especially African American women on [Market Watch](#).

BPW/USA

Companies such as BMW North America, GEICO and Bridgestone Firestone have committed to improving the every-day lives of working women. Like-minded partners such as AARP, American Heart Association, Americans for Secure Retirement and National Partnership for Women and Families are just as critical to our collective success and have stepped up to partner.

As it makes sense, I urge others to increase their community outreach and impart through collaboration. Working together, we will achieve results that positively impact us all.

Deborah L. Frett, CEO

A Message from the CEO,

BPW Women's Magazine

In a tightening economy coupled with a presidential election year, it is of major importance that the voices of working women are loud and strong. As an advocate for workplace equity and work-life effectiveness, Business and Professional Women/USA understands how critical it is to have partners who understand this. We continue to build relationships with those who support our mission and actively work on behalf of the 71 million working women in this country.

Reminders

1. **Give Member of the Year nominations to Dot Ransford by Dec. 12.**
2. **Bring items (unwrapped) for the Louison House, to the Holiday meeting.**
3. **Sell and return raffle tickets to Board members at the Holiday meeting.**
4. **Also, bring to meeting, school supplies for children in Haiti.**

