

Western Gateway Gazette
**Northern Berkshire Business and Professional
Women**

Lucy A. Milette, editor. Elizabeth Manns, copyist/production.

February, 2007

PRESIDENT'S MESSAGE

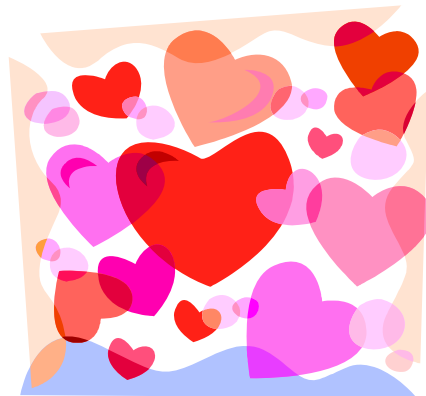
For those who missed our January meeting, I would like to announce that this year's Member of the Year is Lucy Milette. Lucy is a twelve year member of our local who recently completed another term as Secretary. This year she is serving as our Newsletter Chair, Young Careerist Chair, and Co-Chair of our Woman of Achievement Committee. Congratulations Lucy and a heartfelt thank you from all of us for all that you do for our local. NBBPW would be lost without you.

BPW/USA has asked all the locals throughout the country to take part in the **Go Red Campaign** this month. The Go Red Campaign is intended to bring the spotlight on Heart Disease which is the #1 killer of women today. Toward that end our February program will be a panel discussion entitled "Heart, Body, and Soul." Members are encouraged to wear something red to the February 28th meeting.

NBBPW, as part of our District fundraising responsibilities, is creating a "Taste of the Berkshire's" basket. Any items reflective of our area can be included in the basket. Our basket-maker extraordinaire, Lucy Milette has agreed to put the basket together and she asks that members bring items they wish to donate to the basket to our February meeting. District Raffle tickets will also be available for members to pick up or purchase at this meeting.

Our Nominations Chair, Dorothy Ransford, and her committee, over the next two months, will be calling members seeking candidates for local office. Serving on the local's Board is always a fun and rewarding experience and I encourage everyone to give it a whirl. Nominations for District and State office will also be going on at the same time. At the State Level there are openings for Vice-President, Secretary, and Treasurer. The District Level is seeking Candidates for District Director, Asst. District Director, District Nominating Committee, and State Nominating Committee. If you would like to serve BPW on either of these levels, please give me a call at 413-664-7445 or e-mail me at E.Manns@mcla.edu. I will be happy to pass your name on to the appropriate person.

Elizabeth Manns
President



FEBRUARY MEETING

Date: February 28, 2007
Location: Williams Inn
Program: Heart, Body & Soul

Menu: Garden Salad

Choice of:

1. Battered Sole with Artichoke & diced Potato
2. London Broil with Mushroom Sauce
3. Vegetables, tossed with Penne Pasta, oil & garlic

Desert: Boston Crème Pie

Coffee, Tea

Cost: \$20.00

Hostesses: Pauline Davis
413-663-7844
Inna Gertje
413-663-6580

Please remember: Reservations are due by the Friday before the meeting. If you haven't been called, call one of the hostesses above. **Also, you are responsible for reservations made and not honored.** We must pay for meals ordered.

Networking – 6:00

Meeting opens –6:30

Dinner – 6:45

Guests are welcome!

IMPORTANT DATES



February 14 – Valentine's Day
February 19 – Presidents' Day
February 28 – General Meeting
March 3-4 – Winter Board
April 23 – Equal Pay Day
May 18-20 – BPW State Convention,
Holyoke, MA

**The Winter Board Meeting will take place weekend of March 2-4, 2007 at the DoubleTree Hotel, Westborough, MA. Meetings and activities start on Friday afternoon and continue through mid-day on Sunday. ID workshops will be presented on Friday evening, Saturday afternoon and Sunday morning. Deadline for registrations (meeting and hotel) is February 15, 2007. Charges: Meeting - \$75. Mail to Lucienne Pelletier, 45 Riverside Street, Danvers, MA 01923
Hotel - \$89 Single/Double
DoubleTree Inn – 508-366-5511**

IMPORTANT WEBSITES!!

www.bpw/usa.org

www.bpw/ma.org

www.northernberkshirebpw.org



February Birthdays

Sandy LoPresto – 2/5

Margaret McComish – 2/22



Please bring items for the NBBPW "Taste of the Berkshires" basket to the February meeting.



I'd like to thank you for choosing me as your 2007 NBBPW "Member of the Year"!

Lucy

Testimony Needed!

Have you or anyone you know ever experienced wage inequality over the course of a career? Voices are greatly needed to testify at the hearings being staged around the Commonwealth by the Coalition on Women's Wage Equality. BPW/MA is an important member of this coalition and this is one of the ways we can help—PLEASE HELP! Ask everyone you know; volunteer to speak up yourself at any of the following venues. If you can, please notify Kristen Whitfield for details (Kristen@innerweavehealing.com)

Wednesday, Feb. 28

5:30-7:00 – Boston YWCA

Tuesday, March 6

5:30-7:00 - UMASS Lowell

Wednesday, March 28

5:30-7:00 – Bridgewater State College

Wednesday, April 25

5:30-7:00 – Amherst

Wednesday, May 23

5:30-7:00 – Cape Cod

Community College

Wednesday, June 6

5:30-7:00 – New Bedford

YWCA

Bay State News